

## Community Care

- Fracture Prevention Service (West) (Alliance)
- Bladder & Bowel (Alliance)
- Stoma (East) (Alliance)
- Podiatry (Alliance)
- Ultrasound
- ICC Cardiology
- Diabetes

Community Care  
Review Group

## Primary Care

- Unity Healthcare

Primary Care  
Review Group

## Suffolk GP Federation CIC Board

### Integrated Governance Committee

Suffolk GP Federation Audit Committee -  
Finance

Chief Nurse

Medical Director

CEO

Partnerships and  
Development Director

Operations  
Director

Urgent Care  
Medical Director

Primary Care  
Medical Director

Communications

Suffolk GP Hub

Members

Governance

Projects

Finance

HR/Workforce

Synnova – IT - SystemOne support and informatics

Astute – IT - hardware and  
networks

## Mental Health

- Specialist Mental Health  
Nurses

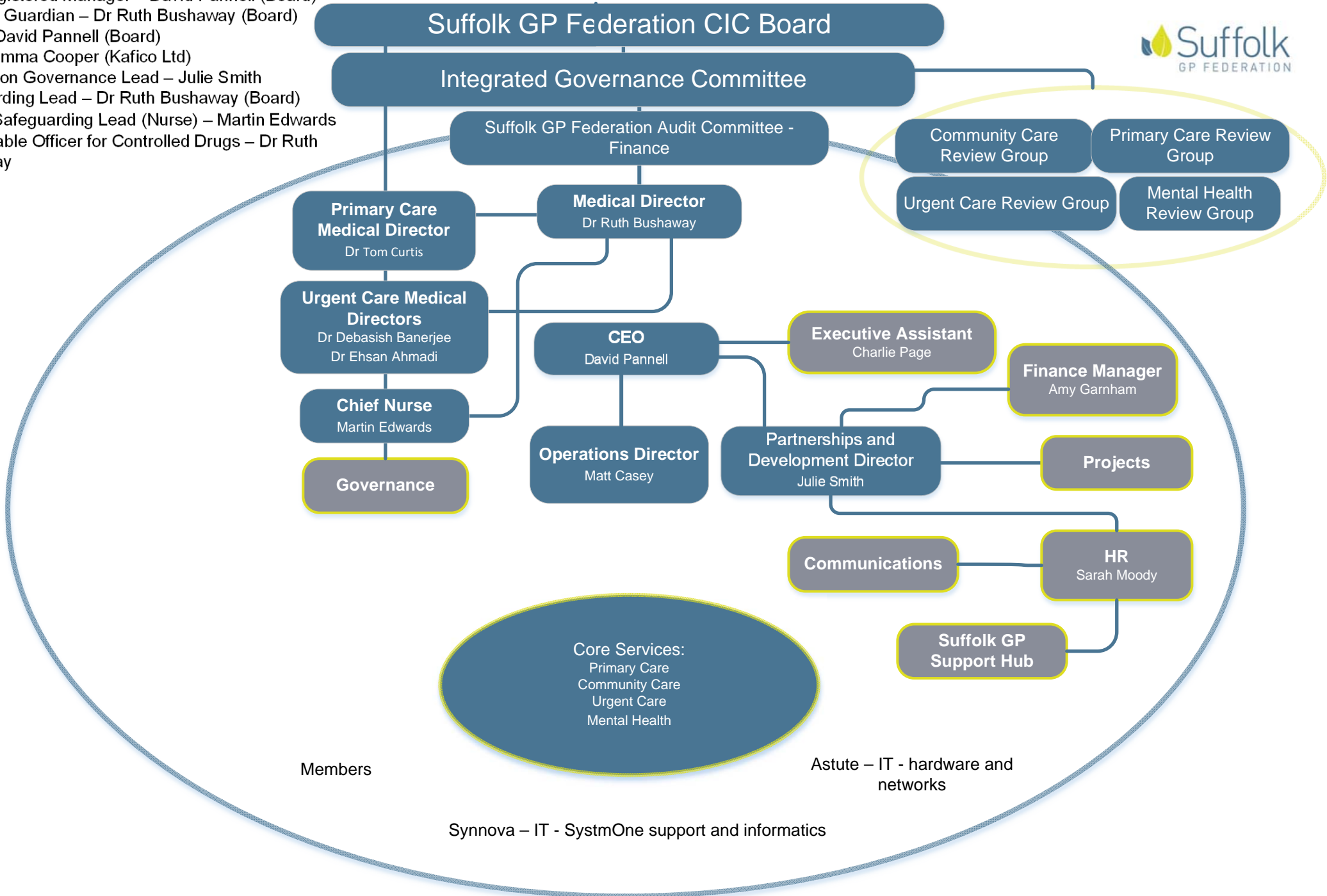
Mental Health  
Review Group

## Urgent Care

- GP+
- ED Streaming
- IUCS – Suffolk F2F (OOH)
- MIC Felixstowe (Alliance)

Urgent Care  
Review Group

CQC Registered Manager – David Pannell (Board)  
Caldicott Guardian – Dr Ruth Bushaway (Board)  
SIRO – David Pannell (Board)  
DPO – Emma Cooper (Kafico Ltd)  
Information Governance Lead – Julie Smith  
Safeguarding Lead – Dr Ruth Bushaway (Board)  
Deputy Safeguarding Lead (Nurse) – Martin Edwards  
Accountable Officer for Controlled Drugs – Dr Ruth Bushaway



# Primary Care

**Primary Care Medical Director**  
Dr Tom Curtis

## Unity Healthcare

**Clinical Lead:**  
Dr David Brandon  
**Service Manager:**  
Laura Lyons

# Urgent Care

**Urgent Care Medical Directors**  
Dr Debasish Banerjee  
Dr Ehsan Ahmadi

## ED Streaming

**Clinical Lead:**  
Catriona McCallum (ANP)  
**Service Manager:**  
Katherine-Addison Turvey

## IUCS

**Clinical Lead:**  
Wendy Hines (ANP)  
**Service Manager:**  
Scott Medler

## GP+

**Clinical Lead:**  
Catriona McCallum (ANP)  
**Service Manager:**  
Katherine-Addison Turvey

**Minor Injuries Clinic (MIC)**  
**Clinical Lead & Service Manager:**  
Samantha Cloud

# Community Care

**Diabetes Service Manager**  
Adele Holcombe

**Alliance Community  
Services Manager**  
Vini Mallen

**Ultrasound and Cardiology  
Service Manager**  
Matt McKechnie

**North East  
Essex Diabetes  
Service**  
**Clinical Lead:**  
Adele Holcombe

**Podiatry**  
**Specialist Leads:**  
Steve Noble, Andy  
Barker, Rachel  
Richardson & Tina  
Belsom

**Stoma (EAST)**

**Bowel &  
Bladder**  
**Specialist Lead:**  
Shirley Carter

**Fracture  
Prevention  
Service  
(WEST)**

**ICC  
Cardiology**  
**Specialist Lead:**  
Dr Stephen Ball

**Ultrasound**  
**Specialist Lead:**  
Shav Patterson

# Primary Care Mental Health Service

**Mental Health Medical Director**  
Dr Ruth Bushaway

**Clinical Leads &  
Service Managers**  
Jason Rogers & Sarah  
Ager

**Specialist  
Mental Health  
Nurses**